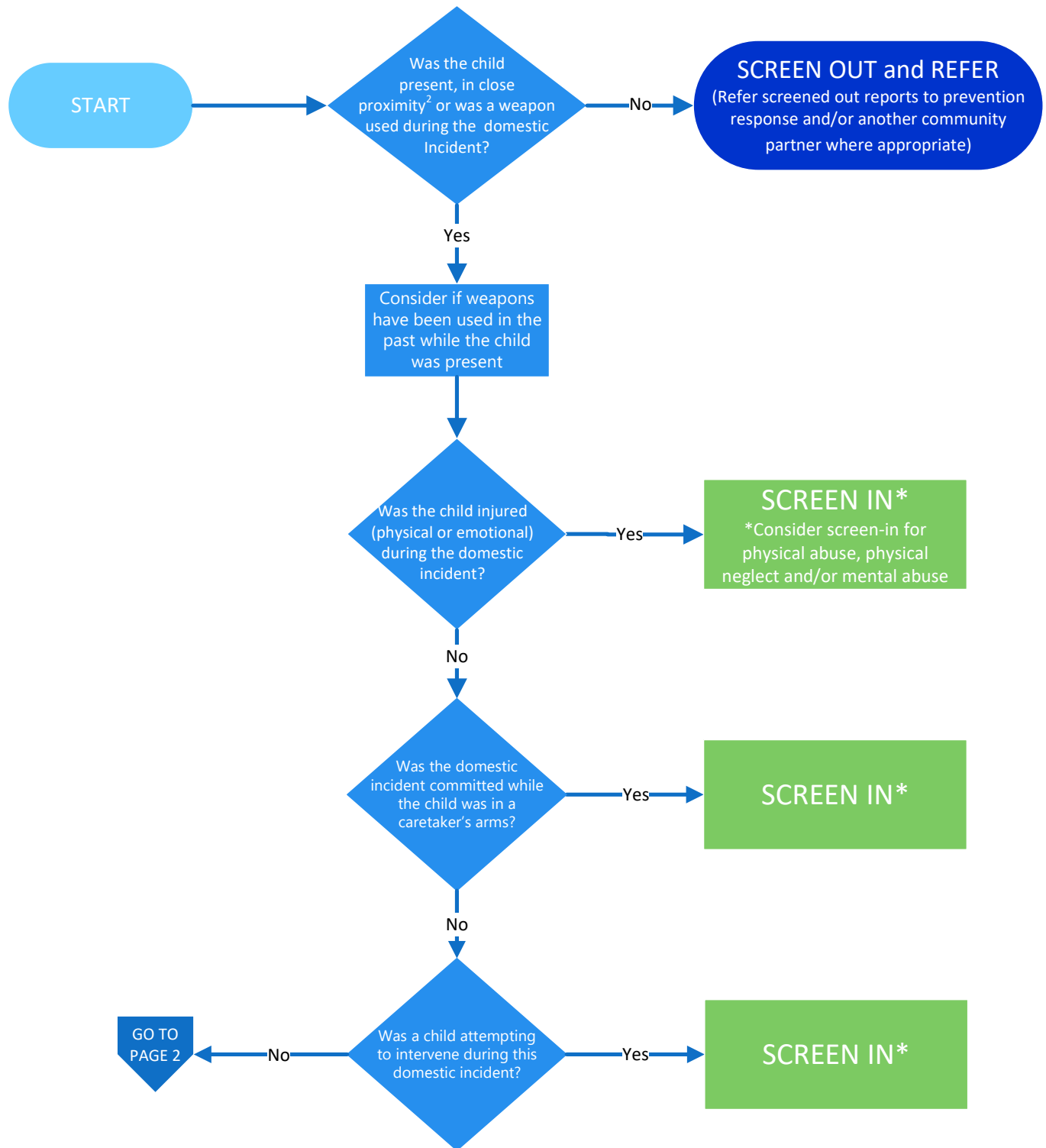


Domestic Violence Decision Tree Tool¹



¹ The LDSS may want to consider the investigation track if one or more of the following are present:

- Use of a weapon
- Involvement of law enforcement or courts to protect children or caretaker
- Physical injury requiring medical treatment
- Co-occurring mental health or substance abuse

² Close Proximity Definition: Children were aware, witnessed or heard the domestic incident.

DV Decision Tree Tool (Page 2)

